

DURAN VENTURES INC.

MANAGEMENT'S DISCUSSION AND ANALYSIS

Form 51-102F1

**For the Three and Nine Month Periods Ended
September 30, 2012**

**DURAN VENTURES INC.
MANAGEMENT'S DISCUSSION AND ANALYSIS
FOR THE NINE MONTHS ENDED SEPTEMBER 30, 2012**

Report Dated November 27, 2012

Overall Performance

General

This Management's Discussion and Analysis is provided for the purpose of reviewing the nine month period ended September 30, 2012 and comparing results to the previous period. This Management's Discussion and Analysis should be read in conjunction with the Company's unaudited condensed consolidated interim financial statements and corresponding notes for the nine month period ending September 30, 2012. The unaudited condensed consolidated interim financial statements are prepared in accordance with International Financial Reporting Standards ("IFRS") and all monetary amounts are expressed in Canadian dollars unless otherwise indicated in the notes to the condensed consolidated interim financial statements.

This Management's Discussion and Analysis is prepared as of November 27, 2012. All of the scientific and technical information has been prepared or reviewed by Jeffrey Reeder, P.Geo., Chief Executive Officer and President of the Company. Mr. Reeder is a Qualified Person within the meaning of National Instrument 43-101 ("NI 43-101"). Additional information relevant to the Company's activities can be found at www.sedar.com.

Forward Looking Statements

Certain statements contained in this Management's Discussion and Analysis constitutes forward-looking statements. Such forward-looking statements involve a number of known and unknown risks, uncertainties and other factors which may cause the actual results, and performance of achievements of the Company to be materially different from actual future results and achievements expressed or implied by such forward-looking statements, which speak only as of the date the statements were made and readers are also advised to consider such forward-looking statements while considering the risk set forth below.

Description of Business

The Company was incorporated under the laws of British Columbia on March 5, 1997 under the name 537926 B.C. Ltd. and its principal business activity is the acquisition and exploration of mineral properties. On June 18, 1997 the Company changed its name to Duran Gold Corp. and on August 10, 2000, the Company changed its name to Duran Ventures Inc. On July 4, 2007, the Company was promoted to the TSX Venture Exchange ("TSXV") as a Tier II. On October 14, 2008, the Shareholders approved the continuance of the Company under the Canada Business Corporations Act, which was completed by October 31, 2008. The Company's common shares were listed for trading on the Risk Capital Segment of the Lima Stock Exchange (Segmento de Capital de Riesgo de la Bolsa de Valores de Lima) in Peru (the "Lima Exchange") effective September 21, 2012. The Company's shares trade on the TSXV and the Lima Exchange under the symbol DRV.

The General and Administrative expenses relate primarily to the costs to maintain a head office in Toronto for a publicly listed company. On-going operating expenses, excluding items such as foreign exchange, exploration property expenditures and share-based compensation expenses, are approximately \$75,000 (2011 - \$68,000) per month.

The Company is not in default under any debt or other contractual obligations. The Company is not in breach of any corporate, securities or other laws or of the terms of the listing agreement with the TSXV or the Lima Exchange.

**DURAN VENTURES INC.
MANAGEMENT'S DISCUSSION AND ANALYSIS
FOR THE NINE MONTHS ENDED SEPTEMBER 30, 2012**

Exploration Properties

All projects are described below.

Aguila Copper-Molybdenum Project

The Aguila Copper-Molybdenum Porphyry Project ("Aguila" or "Aguila Project") is located in the Department of Ancash, which is also host to Compañía Minera Antamina S.A.'s Antamina Mine and Barrick Gold's Pierina Mine. Minera Peñoles de Peru S.A. ("Peñoles") is currently advancing an aggressive drill program at the Racaycocha Property, located immediately adjacent to the south of Aguila. Compañía Minera Milpo S.A.A. ("Milpo") is advancing development work at the Magistral copper – molybdenum porphyry and skarn deposit, located some 40 kilometres to the north of Aguila.

The Aguila area infrastructure is robust and constantly improving, with a large regional hydroelectric plant located on the Santa River approximately 40 kilometres from the project, abundant precipitation, and good road access available from several directions. The central claim area consists of 1,100 hectares covering the Aguila and Pasacancha past producing mines. Duran holds a total of 9,006 hectares in the Aguila area.

Surface mapping, sampling, and geophysical surveys conducted to date demonstrate that the Aguila Project has the potential to become a significant copper-molybdenum resource, with anomalous copper and molybdenum distributed over an irregular 1.7 x 1.2 kilometre surface area and strong geophysical anomalies distributed over a 3.0 x 2.0 kilometre area. Drill intersections to date, show consistent copper and molybdenum values over significant widths, with known areas of mineralization open in several directions and also at depth. Fieldwork and past drilling indicate that there are additional porphyry-style targets in what is recognized as a large emerging mineralized district. Where most technical work and drilling to date has focused on the immediate area of the Aguila intrusive and mine area, the Company has strong indications of significant porphyry copper related mineralization in adjacent zones.

Company geologists describe the Aguila system as being one principal monzonite porphyry intrusive stock with several secondary intrusive bodies. The intrusive rock is the main host of the copper and molybdenum mineralization, but an alteration and mineralization halo extends well into the host sedimentary wallrock. The Aguila intrusive was previously identified as diorite in composition, but recent petrographic studies show it to be monzonite. The porphyritic intrusives are part of a regional-scale event, which includes emplacement of the mineralized intrusive bodies at Aguila, Racaycocha, and Mamaniña over a fourteen kilometre northwest-southeast strike length. There is a strong component of structural control, with a regional northwest trend cut by local northeast-trending cross structures which appear to control emplacement of the intrusive bodies. Peripheral lead-zinc-silver base metal mineralization occurs in the area, notably in the Pasacancha zone roughly two kilometres to the east of Aguila on the Company's property.

On March 23, 2011, the Department of Environmental Affairs of the Peruvian Ministry of Energy and Mines granted a Category 2 Drill Permit for the Company's Aguila Project. The permit allows for 61,600 metres of drilling over a 23 month period. This time frame is calculated from the initiation date of the work program.

On May 27, 2011, the Company filed an NI 43-101 Technical Report for its Aguila Project. The report was prepared by Mr. Neil McCallum, P. Geo., of Dahrrouge Geological Consulting Ltd., who is a "qualified person" under the definition of NI 43-101. The Technical Report recommended further definition and exploration drilling at the Aguila Central and Aguila East zones.

**DURAN VENTURES INC.
MANAGEMENT'S DISCUSSION AND ANALYSIS
FOR THE NINE MONTHS ENDED SEPTEMBER 30, 2012**

The Company completed a \$5.6 million diamond drilling program at Aguila during 2011. A total of 15,175 metres were drilled in 27 diamond drill holes from April to October, 2011 with contractor Energold Drilling Peru S.A.C. A cumulative total of 23,929 metres of core have been drilled by the Company at the Aguila Project from 2007 to 2011.

On March 8, 2012 the Company reported an initial resource estimate for the Aguila Project and on April 20, 2012 the Company filed on Sedar the complete technical report pursuant to NI 43-101. The report, entitled "Mineral Resource Technical Report for the Aguila Copper-Molybdenum Project, Peru" was prepared for Duran by SRK Consulting (Canada) Inc. ("SRK") and authored by G. David Keller, P. Geo. (APGO#1235), a Qualified Person as defined by NI 43-101 and independent of Duran. SRK's Mineral Resource Statement and the Mineral Resource Estimate Sensitivity to Copper Equivalent ("CuEq") selection are summarized below.

**Mineral Resource Statement* for Duran Ventures Inc., Aguila Project, Peru,
SRK Consulting (Canada) Inc., March 8, 2012**

Category	Quantity	Grade			Contained Metal	
	000' tonnes	Cu	Mo	CuEq	Cu	Mo
		%	%	%	Million lb.	Million lb.
Open Pit Resources						
Indicated	27,750	0.61	0.036	0.79	374.5	22.0
Inferred	299,640	0.26	0.019	0.36	1,743.9	125.5
Underground Resources						
Inferred	55,880	0.32	0.033	0.48	394.2	40.7
Total Resources						
Indicated	27,750	0.61	0.036	0.79	374.5	22.0
Inferred	355,520	0.27	0.021	0.38	2,138.2	166.2

* Mineral resources are not mineral reserves and do not have demonstrated economic viability. All figures have been rounded to reflect the relative accuracy of the estimates. Open pit mineral resources are reported at a cut-off grade of 0.22 percent copper equivalent and underground mineral resources are reported at a cut-off grade of 0.26 percent for copper equivalent. Copper equivalent grades are based on averaged metallurgical recoveries of 87 percent copper and 88 percent for molybdenum and metal prices assumptions of US\$2.85 per pound of copper and US\$13.85 per pound of molybdenum.

**DURAN VENTURES INC.
MANAGEMENT'S DISCUSSION AND ANALYSIS
FOR THE NINE MONTHS ENDED SEPTEMBER 30, 2012**

Inferred and Indicated Model Quantities and Grade Estimates*, Aguila Project

Cut-Off Grade CuEq%	Inferred				Indicated			
	Quantity 000' tonnes	Cu %	Mo %	CuEq %	Quantity 000' tonnes	Cu %	Mo %	CuEq %
0.150	616,110	0.22	0.016	0.30				
0.200	445,210	0.25	0.019	0.35				
0.220	382,550	0.27	0.021	0.37	27,750	0.61	0.036	0.79
0.240	327,600	0.28	0.022	0.39	27,750	0.61	0.036	0.79
0.260	278,850	0.30	0.024	0.42	27,730	0.61	0.036	0.79
0.280	237,140	0.32	0.025	0.44	27,710	0.61	0.036	0.79
0.295	210,500	0.33	0.026	0.46	27,700	0.61	0.036	0.79
0.300	201,950	0.34	0.027	0.47	27,690	0.61	0.036	0.79
0.325	164,700	0.36	0.029	0.50	27,580	0.62	0.036	0.79
0.340	146,560	0.38	0.030	0.52	27,470	0.62	0.036	0.80
0.360	126,540	0.40	0.031	0.55	27,280	0.62	0.036	0.80

* The reader is cautioned that the figures in this table should not be misconstrued as a Mineral Resource Statement. The figures are only presented to show the sensitivity of the block model estimates to the selection of cut-off grade.

Duran is very pleased with the results from the 2011 exploration program and 2012 Initial Mineral Resource Estimate by SRK. Drilling was focused on defining the size and tenor of the mineralized system at Aguila. Copper and molybdenum mineralization extends horizontally over 1000 metres east-west, 700 metres north-south, and remains open to the east and west. The system at the Aguila East area has shown to be mineralized over 1000 metres in a vertical sense by drill hole 11AGD029, which was stopped due to depth limitations of the drilling equipment. Further drilling is required to define the ultimate shape, size and orientation of the Aguila mineralized system. Numerous geological, geochemical, and geophysical targets remain to be drill tested. The Company anticipates that it will need to continue stepping back from its current grid of drill holes to ultimately determine the limits of the copper-molybdenum mineralization. The SRK Initial Mineral Resource estimate and statistical modeling will assist the Company in its continuing plan to expand and advance the Aguila project to a preliminary economic assessment (PEA).

The Company believes that the Aguila Project is comparable in style of mineralization and geological setting to the nearby Magistral deposit, which is a copper – molybdenum porphyry and skarn deposit, located some 40 kilometres to the north of Aguila. Milpo obtained the Magistral project in a Peruvian government auction in April of 2011 in return for the obligation to invest \$400 million during a 48 month period, and to make a final \$8.02 million option payment in order to complete the transfer of title to Milpo. Milpo recently acquired all of the outstanding shares of Inca Pacific Resources in order to acquire the area surrounding the main Magistral deposit, and simplify the project's development.

DURAN VENTURES INC.
MANAGEMENT'S DISCUSSION AND ANALYSIS
FOR THE NINE MONTHS ENDED SEPTEMBER 30, 2012

The following table is a summary of drill holes completed by the Company from 2007 to drill hole 11AGD044, completed in October 2011.

HOLE NUMBER	SECTION	FROM (m)	TO (m)	LENGTH (m)	Cu (%)	Mo (%)	CuEq (%)
07 AGD001	10000N	0.00	250.00	250.00	0.650	0.023	0.805
07 AGD002	10000N	0.00	530.60	530.60	0.338	0.023	0.493
07 AGD003	10000N	0.00	510.15	510.15	0.525	0.043	0.816
07 AGD004	10000N	0.00	371.00	371.00	0.343	0.020	0.478
07 AGD004A	10000N	249.60	628.20	378.60	0.254	0.006	0.295
including		249.60	388.60	139.00	0.472	0.009	0.533
07 AGD005	10000N	0.00	401.00	401.00	0.209	0.011	0.283
08 AGD006	10000N	5.20	723.30	718.10	0.555	0.041	0.832
including		137.00	708.40	571.40	0.647	0.041	0.924
08 AGD007B	10000N	0.00	90.00	90.00	0.594	0.045	0.898
08 AGD008	10050N	0.00	522.30	522.30	0.626	0.049	0.957
including		0.00	342.40	342.40	0.853	0.046	1.164
08 AGD009	9900N	5.00	485.40	480.40	0.373	0.029	0.569
including		76.40	439.60	363.20	0.439	0.029	0.635
08 AGD010	9900N	6.90	574.00	567.10	0.147	0.011	0.221
08 AGD011B	9950N	1.00	605.30	604.30	0.425	0.029	0.621
08 AGD012	9950N	2.90	567.10	564.20	0.365	0.030	0.568
including		2.90	281.20	278.30	0.625	0.026	0.801
08 AGD013	10050N	0.50	578.90	578.40	0.427	0.046	0.738
including		0.50	146.75	146.25	0.931	0.043	1.222
including		0.50	458.60	458.10	0.497	0.053	0.855
08 AGD014	10100N	4.35	459.60	455.25	0.499	0.038	0.756
including		131.12	390.70	259.58	0.652	0.041	0.929
09 AGD015	10150N	0.40	444.10	443.70	0.368	0.021	0.510
including		0.40	224.00	223.60	0.516	0.021	0.658
10 AGD016	10050N	0.00	620.60	620.60	0.490	0.033	0.720
including		0.00	396.00	396.00	0.690	0.042	0.980
10 AGD017	9950N	0.00	147.00	147.00	0.364	0.004	0.364
including		0.00	71.00	71.00	0.620	-	0.620
11AGD018	10000N	0.00	480.80	480.80	0.690	0.031	0.930
including		0.00	163.50	163.50	0.600	0.025	0.780
including		163.50	480.80	317.30	0.740	0.042	1.020
		480.80	564.50	83.70	0.200	0.023	0.360
11AGD019	10000N	0.40	496.00	495.60	0.310	0.027	0.500
including		284.00	496.00	212.00	0.440	0.022	0.590
including		284.00	330.00	46.00	0.700	0.013	0.790
11AGD020	10000N	0.00	640.00	640.00	0.410	0.033	0.640
including		0.00	333.90	333.90	0.600	0.035	0.850
and		333.90	640.00	306.10	0.190	0.031	0.410
including		421.60	459.50	37.95	0.480	0.025	0.640

**DURAN VENTURES INC.
MANAGEMENT'S DISCUSSION AND ANALYSIS
FOR THE NINE MONTHS ENDED SEPTEMBER 30, 2012**

HOLE NUMBER	SECTION	FROM (m)	TO (m)	LENGTH (m)	Cu (%)	Mo (%)	CuEq (%)
11AGD021	10100N	0.00	335.00	335.00	0.480	0.036	0.720
including		80.80	278.00	197.20	0.640	0.030	0.920
		335.00	525.00	190.00	0.170	0.020	0.310
11AGD022	10100N	0.15	117.50	117.35	0.870	0.029	1.060
		117.50	216.30	98.80	0.290	0.020	0.430
		216.30	320.50	104.20	0.230	0.012	0.310
		320.50	557.30	236.80	0.120	0.007	0.160
11AGD023	10100N	11.80	699.00	687.20	0.200	0.031	0.410
including		11.80	487.00	475.20	0.230	0.039	0.490
including		11.80	356.50	344.70	0.200	0.043	0.500
and		243.00	487.00	244.00	0.320	0.040	0.590
11AGD024	9900N	0.00	590.00	590.00	0.210	0.019	0.340
including		0.00	188.96	188.96	0.300	0.022	0.460
and		314.50	392.60	78.10	0.340	0.007	0.390
11AGD025	9900N	4.50	662.60	658.10	0.170	0.029	0.370
including		21.00	342.50	321.50	0.220	0.047	0.540
including		21.00	263.00	242.00	0.230	0.053	0.580
11AGD026	10200N	0.40	665.80	665.40	0.220	0.008	0.280
including		0.40	562.50	562.10	0.250	0.010	0.320
including		0.40	302.50	302.10	0.330	0.016	0.440
11AGD027	9900N**	3.2	122.0	118.8	0.20	0.004	0.23
		296.5	333.5	37.0	0.19	0.003	0.21
		383.5	407.3	23.8	0.27	0.002	0.29
		440.5	463.0	22.5	0.30	0.001	0.30
11AGD028	9900N	0.5	127.5	127.0	0.20	0.004	0.23
11AGD029	10300N**	2.0	1001.1	999.10	0.33	0.029	0.53
		2.0	395.5	393.50	0.24	0.020	0.37
		395.5	499.4	103.90	0.25	0.044	0.56
		499.4	806.0	306.60	0.55	0.047	0.87
		806.0	1001.1	195.10	0.21	0.012	0.29
11AGD030	10000N**	0.15	92.5	92.35	0.19	0.007	0.24
		140.00	186.2	46.20	0.23	0.004	0.26
		301.00	320.5	19.50	0.34	-	0.34
11AGD031	10200N	0.15	301.5	301.35	0.26	0.011	0.33
		354.00	378.5	24.50	0.23	0.002	0.24
11AGD032	9950N	0.60	398.50	397.90	0.20	0.023	0.36
including		0.60	236.50	235.90	0.20	0.029	0.40
and		298.73	342.90	44.17	0.35	0.025	0.52
and		342.90	398.50	55.60	0.20	0.012	0.28
		398.50	515.00	116.50	0.34	0.010	0.41
11AGD033	10000N**	0.30	252.00	251.70	0.33	0.004	0.36
11AGD034	10050N	3.40	570.35	566.95	0.19	0.009	0.26
including		3.40	281.00	277.60	0.24	0.016	0.35
including		161.50	281.00	119.50	0.32	0.008	0.38

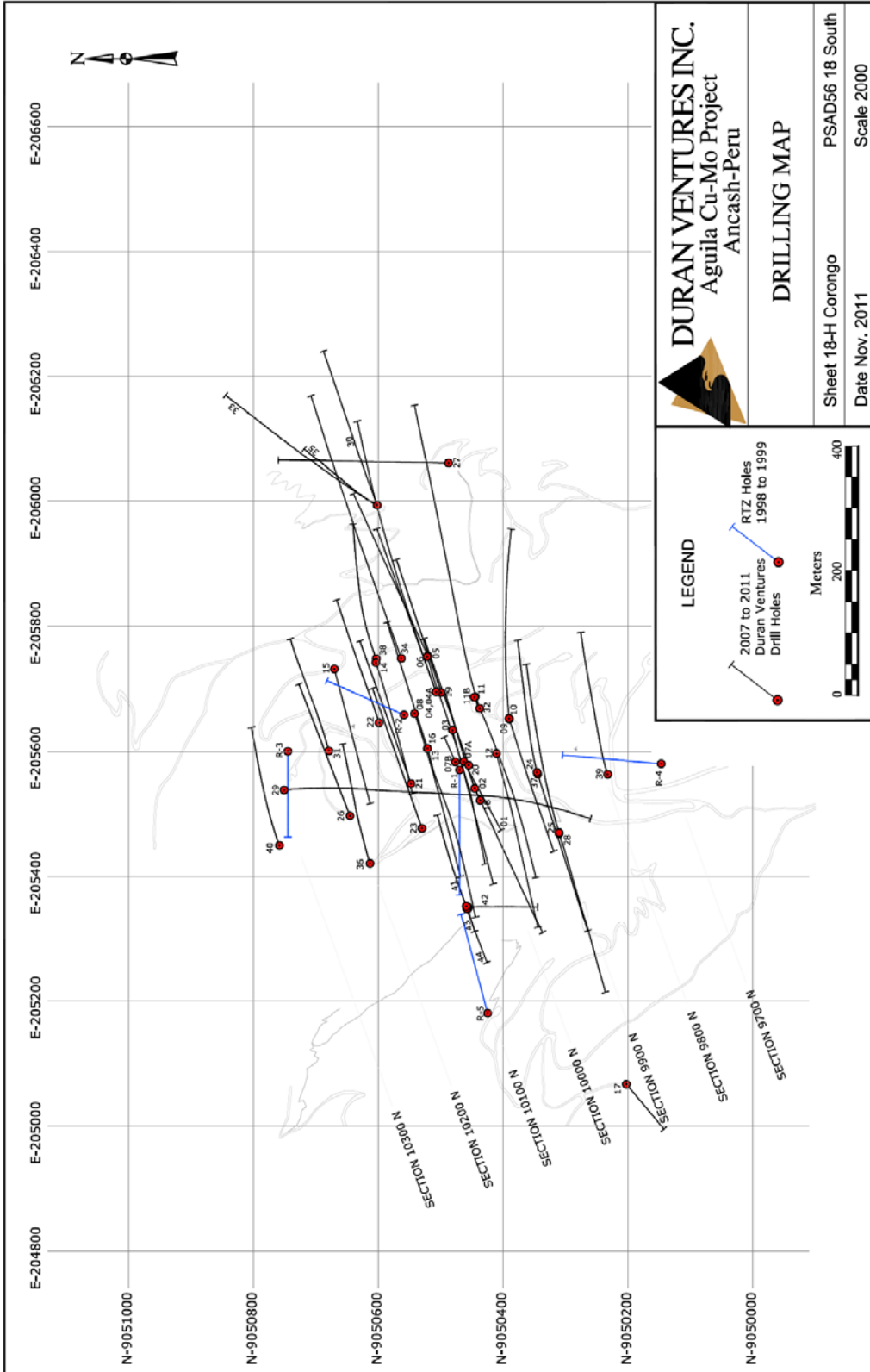
**DURAN VENTURES INC.
MANAGEMENT'S DISCUSSION AND ANALYSIS
FOR THE NINE MONTHS ENDED SEPTEMBER 30, 2012**

HOLE NUMBER	SECTION	FROM (m)	TO (m)	LENGTH (m)	Cu (%)	Mo (%)	CuEq (%)
11AGD035	10000N**	0.40	450.70	450.30	0.21	0.003	0.24
including		0.40	301.00	300.60	0.25	0.005	0.29
11AGD036	10200N	14.70	594.50	579.80	0.22	0.009	0.29
including		14.70	381.29	366.59	0.28	0.013	0.37
11AGD037	9900N	0.00	541.20	541.20	0.17	0.030	0.37
including		0.00	245.70	245.70	0.24	0.045	0.55
and		0.00	79.50	79.50	0.34	0.051	0.69
11AGD038	10100N	2.10	581.65	579.55	0.15	0.013	0.24
including		2.10	354.50	352.40	0.19	0.015	0.30
and		2.10	189.50	187.40	0.20	0.023	0.36
11AGD039	9800N	9.60	515.20	505.60	0.13	0.009	0.19
including		9.60	313.50	303.90	0.16	0.013	0.25
including		9.60	111.00	101.40	0.23	0.018	0.35
11AGD040	10300N	1.50	525.00	523.50	0.10	-	0.10
including		1.50	202.50	201.00	0.15	-	0.15
including		166.50	202.50	36.00	0.24	0.001	0.25
11AGD041	10100N	0.15	491.00	490.85	0.31	0.023	0.47
including		0.15	317.10	316.95	0.34	0.017	0.46
including		82.50	317.10	234.60	0.37	0.022	0.52
11AGD042	10100N**	1.25	200.10	198.85	0.25	0.002	0.26
including		1.25	90.00	88.75	0.42	0.003	0.44
11AGD043	10100N	0.50	568.50	568.00	0.22	0.003	0.24
		196.50	420.97	224.47	0.28	0.001	0.29
11AGD044	10100N	0.24	150.00	149.76	0.24	0.001	0.25
including		0.24	39.50	39.26	0.39	0.001	0.41

Total Cu equivalent is the sum of the Cu% plus 6.756 times the Mo% based on an assumed 6.756:1 economic ratio of Mo to Cu selling prices (i.e. US\$1.85 Cu to US\$12.50 Mo). Metallurgical recoveries and net smelter returns are assumed to be 100%. These equivalence grades should not be interpreted as actual grades since the conversion ratio varies with the volatile prices of copper and molybdenum and the economic recovery of copper and molybdenum can vary significantly in actual extraction and processing. The Company feels this is a reasonable long term ratio to use for this purpose.

**DURAN VENTURES INC.
MANAGEMENT'S DISCUSSION AND ANALYSIS
FOR THE NINE MONTHS ENDED SEPTEMBER 30, 2012**

AGUILA DRILL HOLE LOCATION MAP



**DURAN VENTURES INC.
MANAGEMENT'S DISCUSSION AND ANALYSIS
FOR THE NINE MONTHS ENDED SEPTEMBER 30, 2012**

The Company engaged G&T Metallurgical Services Ltd. ("G&T") of Kamloops, B.C. to carry out a series of laboratory tests to determine the metallurgical character of the potential ore types at the Aguila Property. These programs were designed to determine prospective metal recoveries and applicability of conventional grind/flotation processes that can be applied for future economics for the project.

Two sample composites were prepared by the Company's geologists using 208 kilograms of Aguila drill core. The two composites represent a higher grade composite sample and a lower grade composite sample. The higher grade composite sample was prepared from drill core intersecting the main Aguila intrusive porphyry. The lower grade composite was prepared from the mineralized sediments or wallrock.

The initial metallurgical work was successful. Mineralogy and locked cycle flotation test results indicate that the copper and molybdenum essentially occur as primary sulphides that can be readily recovered to a commercial concentrate by standard flotation techniques.

The following tables have been taken from the G&T report, dated December 21, 2011. A summary of the head assay analysis follows:

Composite	Cu %	Mo %	Fe %	Ag g/tonne	S %	C %	Cu(ox)%	Cu(CN)%
Intrusive	0.69	0.038	2.5	2	1.51	0.18	0.002	0.013
Sedimentary	0.27	0.023	1.7	1	0.82	0.17	0.002	0.009

G&T reports that the metallurgical test program included batch rougher and open circuit cleaner flotation tests on each composite, as well as locked cycle flotation tests. Preliminary results indicate that the process flow sheet for Aguila will be a conventional copper-molybdenum porphyry flow sheet, with a primary grind size of 150 micrometres K_{80} for both composites followed by a regrind to 30 micrometres K_{80} for the intrusive composite and a regrind to 25 micrometres K_{80} for the sedimentary composite. The locked cycle flotation test on the intrusive composite indicated that 93% of the copper and 91% of the molybdenum in the feed was recovered into a final copper concentrate containing 28 percent copper. This concentrate also contained 1.5 percent molybdenum, and 82 g/tonne silver. The locked cycle flotation test on the sedimentary composite indicated that 83% of the copper and 82% of the molybdenum in the feed was recovered into a final copper concentrate containing 24 percent copper. This concentrate also contained 1.7 percent molybdenum, and 110 g/tonne silver.

The following two tables summarize the test results from each composite:

Product	Weight %	Assay - percent or g/t					Distribution				
		Cu	Mo	Fe	S	Ag	Cu	Mo	Fe	S	Ag
Intrusive Test											
Flotation Feed	100	0.71	0.04	2.6	1.51	3	100	100	100	100	100
Bulk Con	2.4	27.7	1.463	31.0	34.1	82	93	91	28	54	63
Bulk 1st Clnr Tail	5.7	0.50	0.02	13.3	8.30	4	4	3	29	32	7
Bulk Ro Tail	91.9	0.03	0.002	1.2	0.24	1	3	6	43	15	30

**DURAN VENTURES INC.
MANAGEMENT'S DISCUSSION AND ANALYSIS
FOR THE NINE MONTHS ENDED SEPTEMBER 30, 2012**

Product Sedimentary Test	Weight %	Assay - percent or g/t					Distribution				
		Cu	Mo	Fe	S	Ag	Cu	Mo	Fe	S	Ag
Flotation Feed	100	0.26	0.02	1.7	0.82	2	100	100	100	100	100
	0.9	23.5	1.724	32	35.6	110	83	82	17	40	45
Bulk 1st Clnr Tail	5	0.62	0.02	11	6.39	6	12	5	32	39	13
Bulk Ro Tail	94.1	0.01	0.003	0.9	0.19	1	5	13	52	21	42

The conclusion in the report entitled "*PRELIMINARY ASSESSMENT OF THE TWO COMPOSITE SAMPLES FROM THE AGUILA DEPOSIT KM3161*", dated December 21, 2011 and prepared by G&T Metallurgical Services Ltd. from their work performed on the Aguila intrusive and sedimentary composite samples is quoted as follows:

"A preliminary assessment metallurgical test program aimed to investigate ore characteristics and flotation response of two composite samples from the Aguila deposit was undertaken. The two composites samples constructed for this program of study represented Intrusive and Sedimentary ores.

On average, the samples contained about 0.5 percent copper, 0.03 percent molybdenum, and 1.5 g/tonne silver.

Mineralogy showed that, at a nominal 150 micrometres K80 primary grind sizing, chalcopyrite was slightly over 45 percent liberated in the two samples, with the majority of the particle interlocking occurring with non-sulphide gangue.

*The average Bond ball and Bond rod work indices for the two samples were 13.2 and 14.1 kWh/tonne, respectively. SMC test results indicated that the average A*b and t10 at 1 kWh/t values were about 29 and 25, respectively. These ore hardness results would classify the two samples as hard.*

A basic bulk flotation flow sheet was developed incorporating a moderate primary grind size of about 150µm K80. The pH in the rougher circuit was elevated to pH 10 using lime. Potassium Amyl Xanthate (PAX) and fuel oil were used as the copper and molybdenum collectors, respectively. A regrind of about 20 to 30µm K80 was required to produce high grade copper concentrates. The pH of the cleaning stages was elevated to pH 11 using lime.

Results from a locked cycle test on the Intrusive sample indicated that about 93 percent of the copper in the feed was recovered into a final copper concentrate containing 28 percent copper. This concentrate also contained 1.5 percent molybdenum, and 82 g/tonne silver.

Results from a locked cycle test on the Sedimentary sample indicated that about 83 percent of the copper in the feed was recovered into a final copper concentrate containing 24 percent copper. This concentrate also contained 1.7 percent molybdenum, and 110 g/tonne silver. These concentrate molybdenum grades, on average, about 1.6 percent; should be sufficient for the efficient separation of a molybdenum concentrate.

Concentrations of deleterious elements appear below typical smelter penalty thresholds."

The Company is very pleased with the initial metallurgical results on the intrusive and sedimentary composite samples containing the copper and molybdenum mineralization at Aguila. The high recoveries and the lack of any deleterious elements indicate that the process flow sheet should be conventional and straightforward. Further metallurgical work is recommended by G&T and will follow in accord with the development of the project.

**DURAN VENTURES INC.
MANAGEMENT'S DISCUSSION AND ANALYSIS
FOR THE NINE MONTHS ENDED SEPTEMBER 30, 2012**

Mamaniña Porphyry Copper-Molybdenum-Gold Project

The Company holds the 3 contiguous Mamaniña concessions, covering a total of 1,800 hectares, in the Province of Huaylas in the Department of Ancash. The concessions are located approximately 14 kilometres to the south of the Company's flagship Aguila Copper-Molybdenum Porphyry Project.

The Mamaniña concessions are considered by Duran geologists to be a high quality copper-molybdenum exploration target. Previous work performed by Queenstake Resources Limited ("Queenstake") and Alamos Minerals Limited ("Alamos") in a joint venture operated from 1995-1997, and Monterrico Metals PLC ("Monterrico") during 2001-2008, defined both porphyry copper molybdenum and copper-gold-zinc skarn mineralization on surface. Company geologists confirmed the geological characteristics of the previous work programs and recommended the acquisition of the new concessions.

Queenstake and Alamos found copper-molybdenum bearing porphyritic stocks hosted by clastic and carbonate sediments at Mamaniña. Carbonate replacement skarn-type mineralization occurs at contacts between the intrusive and sedimentary units. An airborne magnetic and radiometric geophysical survey defined an anomaly two kilometres in diameter which coincides with these mineralized zones on surface. Sampling by Queenstake and Alamos returned values of up to 2.1% copper, 0.6% zinc, and 9.48 g Au/T. A joint news release was filed on Sedar by Queenstake and Alamos dated November 3, 1997.

Monterrico carried out a very limited diamond drill program in late 2002, targeting near surface copper anomalies in the skarn area. Results are not known with the exception that Monterrico's 2002 Annual Report noted that drilling intersected high-grade copper mineralization including 25 metres at 1.65% copper starting at 14 metres below surface. It was also noted that low grade gold was discovered in the same hole. Monterrico's geologists recommended further exploration for a potential gold resource in the southern sector of the property, indicated by a widespread geochemical anomaly.

The proximity to Duran's Aguila and Peñoles' Racaycocha Projects reinforces the Company's view that the Aguila area is a new emerging mineralized district. The acquisition of the Mamaniña Cu-Mo-Au concessions reflects Duran's corporate strategy to focus on the Company's main projects while retaining its entrepreneurial approach to securing quality new concessions, particularly in the vicinity of its key projects.

Corongo Property

This 3,100 hectare block of claims is located five kilometres to the northwest of the main Aguila/Pasacancha claim block. The Corongo Property is located in a portion of the Western Cordillera of Peru that hosts numerous precious and base metal deposits, including Barrick Gold Corporation's Pierina and Lagunas Norte gold mines and Compania Minera Antamina S.A.'s Antamina copper-zinc mine. The Corongo Property is considered very prospective for sediment-hosted structurally controlled gold and silver mineralization, as well as porphyry copper related mineralization. Significant gold and silver results were returned from 401 samples collected during the 2010 work program, collected from the Santa Rosa East and Descubridora Zones.

The Company signed a property option agreement (the "Corongo Agreement") with Viper Gold Ltd. ("Viper") in 2010, whereby Viper could acquire a 50% interest in the Corongo Property. Under the terms of the Corongo Agreement, Viper acquired a 50% interest by paying the Company US\$25,000 (paid - \$25,348) on signing the Corongo Agreement; incurring exploration expenditures of not less than US\$1,000,000 (incurred as of December 31, 2011); and issuing the Company an aggregate amount of 1,000,000 common shares of Viper. Viper has completed all of its obligations under the Corongo Agreement. As at the date of this report the Company is in the process of issuing to Viper shares in Corongo Exploraciones SAC, representing Viper's 50% ownership interest.

**DURAN VENTURES INC.
MANAGEMENT'S DISCUSSION AND ANALYSIS
FOR THE NINE MONTHS ENDED SEPTEMBER 30, 2012**

The Company was granted a Category 1 Drill Permit for the Corongo Project from the Peruvian Ministry of Energy and Mines on December 20, 2010. The permit allows up to 20 drill platforms. Surface rights agreements have been signed with the two communities which exist within the Santa Rosa East and Descubridora Zones. During 2011 a total of 1,757 metres was drilled in 12 holes. The drilling was designed to test high priority targets on the Santa Rosa East and Descubridora Zones for sediment-hosted, structurally controlled gold and silver mineralization.

Drill holes 11COR001 through 11COR008 were drilled in the Santa Rosa East Zone: holes 11COR009 and 11COR010 were drilled in the Descubridora Zone: and 11COR011 and 11COR012 were drilled in the Santa Rosa Zone. Assay results confirm the presence widespread anomalous gold, silver, and copper in structurally complex zones. All assay intervals are apparent and not true widths (defined as being measured at right angles to the direction of extension of the sulphide body). Drilling intersected gold and silver mineralization associated with quartz-veins and quartz stockworks with alteration consistent with epithermal systems.

Results from the Santa Rosa East Zone were significant. The strongest intercepts were in hole 11COR004, with 1.7 metres of 2.1 grams of gold per tonne (g Au/T), 1,785 grams of silver per tonne (g Ag/T), and 2.65 % copper. 11COR002 cut 2.5 metres of 0.57 g Au/T, 60.9 g Ag/T, and 0.14 % copper.

Drilling at the Descubridora Zone returned 4.4 metres of 1.18 g Au/T and 10.3 g Ag/T in hole 11COR009. These results are from altered and mineralized wallrock and not a principal vein structure: an open underground adit was cut at roughly 33 metres vertical depth from surface, indicating that the main mineralized structure had been mined out to this depth. Hole 11COR010 averaged 3.57 g Au/T and 25.6 g Ag/T over 3 metres, and also encountered an open underground adit where the vein had been mined out at about 18 metres vertical depth. In neither case was the principal mineralized structure sampled.

Drill holes 11COR011 and 11COR012 in the Santa Rosa area were designed to target areas of known porphyry copper style mineralization hosted in intrusive dykes or sills. In hole 11COR011 in the Santa Rosa Zone, an intersection of 2.6 metres of 1.17 g Au/T, 96.8 g Ag/T, and 2.2 % copper was cut from 37.9 to 40.5 metres depth.

During the three months ended September 30, 2012, a soil sampling program was carried out on the property which identified a new copper/molybdenum in soil anomaly over an area of 1,200 metres east-west and up to 900 metres north-south. The soil sampling program consisted of 215 samples taken along north-south lines with a 200 metres line separation with a maximum length of 1,500 metres. The soil sampling program focused on the Pucapampa area located over 3 kilometres to the east of the Santa Rosa zone that was drilled in 2011. The program was designed to identify areas of potential copper-molybdenum mineralization under cover associated with an altered dioritic intrusion. Copper-in-soil values included 78 samples (36%) with more than 500 parts-per-million ("ppm") and molybdenum-in-soils values included 79 samples (37%) with more than 100 ppm. Results from sampling indicate a broad copper and molybdenum anomaly (defined by values of greater than 500 ppm copper and/of 100 ppm molybdenum) that is broadly coincident with the interpreted boundaries of the altered dioritic intrusion.

Duran is encouraged by these results, which confirm the gold, silver, and copper values reported by the Company in previous surface and underground adit channel samples. The presence of wide spread copper mineralization in the sedimentary units may indicate proximity to a porphyry copper system.

**DURAN VENTURES INC.
MANAGEMENT'S DISCUSSION AND ANALYSIS
FOR THE NINE MONTHS ENDED SEPTEMBER 30, 2012**

The following table summarizes significant results from the entire program:

HOLE ID	AREA	FROM (m)	TO (m)	INT (m)	Au (g Au/T)	Ag (g Ag/T)	Cu (%)	
11 COR 001	SRE	96.00	105.00	9.00	-	1.11	0.14	
		151.10	158.50	7.40	0.12	2.50	-	
		324.00	328.40	4.40	0.25	3.85	-	
11 COR 002	SRE	6.80	10.50	3.70	0.29	6.35	0.11	
		8.00	30.00	22.00	0.02	1.21	0.11	
		152.00	154.50	2.50	0.57	60.90	0.14	
11 COR 003	SRE	0.20	15.00	14.80	0.07	3.00	0.14	
		10.50	15.00	4.50	0.17	3.26	0.28	
		48.00	54.00	6.00	0.02	16.80	0.13	
11 COR 004	SRE	0.00	6.00	6.00	1.08	16.55	0.34	
		including	4.50	6.00	1.50	4.07	61.20	1.30
			73.90	76.20	2.30	1.63	1325.60	1.98
including		74.50	76.20	1.70	2.15	1785.00	2.64	
11 COR 005	SRE	No significant results						
11 COR 006	SRE	38.95	44.60	5.65	0.32	2.05	0.03	
11 COR 007	SRE	103.50	104.57	1.07	0.34	-	-	
11 COR 008	SRE	2.75	3.83	1.08	0.29	19.4	0.06	
11 COR 009	DES	9.50	10.50	1.00	0.48	6.1	-	
		31.50	34.50	3.00	0.88	0.9	-	
		42.00	46.40	4.40	1.18	10.3	-	
11 COR 010	DES	7.00	9.50	2.50	0.42	37.7	-	
		DES	19.50	27.00	7.50	1.50	12.1	-
		including	DES	19.50	22.50	3.00	3.57	25.6
11 COR 011	SR	37.90	40.50	2.60	1.17	96.8	2.21	
		60.00	63.00	3.00	0.24	24.5	0.22	
11 COR 012	SR	29.95	63.00	33.05	-	0.46	0.13	
		69.00	70.50	1.50	0.26	19.7	-	

All assay intervals reported are core length and do not represent true widths (defined as being measured at right angles to the direction of extension of the sulphide body).

SRE: Santa Rosa East; **DES:** Descubridora; **SR:** Santa Rosa

Geological Model

The Company interprets the model of the gold and silver mineralization at the Corongo Project as an intermediate sulphidation epithermal system. Characteristics of this type of system include the proximity of gold and silver mineralization to porphyritic diorite/monzonite intrusive bodies, drusy quartz stockworks, banded textures in the quartz and quartz-sulfide veins, and the geochemical association of gold and silver with arsenic, antimony, barium, bismuth, lead, and zinc.

Emplacement of the gold and silver mineralization at the Santa Rosa Zone appears to be controlled by intersections of fractures and faults, which trend generally northwest, northeast, and sub-horizontal. Quartz stockworks are formed at the intersections of two or more of these structural trends, forming complex three-dimensional zones. Zones with stronger mineralization are marked by widespread phyllic (quartz-sericite-pyrite) alteration in the vicinity of the stockwork quartz veining. Anomalous gold and silver mineralization occurs in an irregular area measuring roughly 200 x 500 metres in size.

**DURAN VENTURES INC.
MANAGEMENT'S DISCUSSION AND ANALYSIS
FOR THE NINE MONTHS ENDED SEPTEMBER 30, 2012**

Gold and silver mineralization at the Descubridora Zone is predominantly controlled by northeast-southwest trending structures. The main mineralized zone as defined at present measures approximately 350 x 50 metres in size, but anomalous gold and silver values occur over a 600 x 250 metre area.

The gold and silver values from previous surface work programs and the significant size of the mineralized zones indicate significant exploration potential. The Corongo Project hosts several other zones with significant precious metal potential, such as Santa Rosa West, the Breccia Zone, and Pucapampa, which returned results of up to 3.5 g Au/T in underground channel sampling on a vein structure in Company sampling in 2009. The Company intends to continue exploration and expansion in these zones.

Ichuña Copper-Silver Project

The Ichuña Copper-Silver Project (1,000 hectares) is located 120 kilometres northeast of Arequipa in the Department of Moquegua in Southern Peru and adjacent to the Chucapaca Project of, a diatreme breccia body with significant gold and copper mineralization, owned by Minera Gold Fields Peru S.A. ("Goldfields") and Compañía de Minas Buenaventura S.A.A. ("Buenaventura"). The recent published mineral resource by these companies showed that the Canahuire Zone within the Cucapaca Project area is estimated to contain 92.6 million tonnes of 1.5 g Au/T and 11.6 g Ag/T for an indicated resource of 4.3 million ounces of gold and 34.6 million ounces of silver. The inferred resource contains 40.2 million tonnes of 1.4 g Au/T and 8.9 g Ag/T for 1.8 million ounces of gold and 11.5 million ounces of silver. The Canahuire Zone is located less than 3 kilometres from the southern boundary of the Ichuña Project.

Company geologists have so far defined seven mineralized zones on the Ichuña property with a variety of styles of mineralization related to intrusive events. These include porphyritic intrusive bodies and sub-volcanic intrusive bodies displaying evidence of supergene copper enrichment, skarn zones at the contacts between intrusive and carbonate-rich sedimentary rock, and altered stockwork zones in intrusive, volcanic, and sedimentary units. The evidence points to a widespread, well-mineralized hydrothermal system related to intrusive activity, with anomalous copper, silver, lead, zinc, arsenic, barium, antimony, and manganese. The mineralized zones cover an area larger than 1.0 x 2.5 kilometres.

Three field campaigns were carried out in 2010, with a total of 790 samples collected. During the two initial work campaigns, a total of 173 samples were collected. Samples were collected as 0.5 to 3.0 metre rock channel samples, as well as panel samples ranging from 0.5 x 1.0 metre to 3.0 x 3.0 metre areas. Silver values ranged as high as 1,645 g Ag/T (47.9 troy oz/ton), with 19 of 173 samples assaying greater than 100 g Ag/T and 50 of 173 samples assaying greater than 10 g Ag/T. 35 of 173 samples had copper values of greater than 1.0%, with values as high as 10.2% copper. 68 of 173 samples had copper values greater than 0.1% copper, showing very widespread anomalous copper values. Lead and zinc values were elevated as well, with 40 of 173 samples assaying over 0.1% lead, with a high value of 6.1% lead. 41 of 173 samples assayed greater than 0.1% zinc, with 5 samples returning over 1.0%.

Geological Model

Geological mapping during this program identified sedimentary clastic and carbonate rocks cut by high level intrusive and volcanic units. Strongly anomalous copper and silver mineralization occurs near sediment-intrusive contacts, as disseminations in intrusive units, and in stockwork zones in both sedimentary and intrusive or volcanic units. Company geologists are interpreting the Ichuña system as being the upper levels of a porphyry copper system, with associated vein structures developed in both host sedimentary and intrusive units. The system has seen considerable surface oxidation, with iron oxide minerals such as limonite, goethite, and jarosite being commonly found. Visible copper occurs as secondary or remobilized minerals, including malachite, azurite, chrysocolla, tenorite, and

**DURAN VENTURES INC.
MANAGEMENT'S DISCUSSION AND ANALYSIS
FOR THE NINE MONTHS ENDED SEPTEMBER 30, 2012**

chalcocite. This mineral assemblage may indicate the presence of a capping of leached rock with the potential for supergene enrichment of copper at some depth. Elevated silver values with relatively little evidence of silver-bearing sulfide minerals may indicate that there is supergene enrichment of silver as well. The extensive surface area with strongly altered rock and elevated copper, silver, lead, zinc, arsenic, barium, and antimony indicates the potential for a strong intrusive-driven hydrothermal system underlying the Ichuña Project. Mineralized structures form two distinct populations, one of which ranges in strike between 30 to 80 degrees, and the second between 110 to 160 degrees.

The Company has received the Category 1 drill permit for the Ichuña Project and is in the application process for the Category 2 drill permit. The Company has signed agreements with the local community and work has commenced on road building to provide access to drill sites.

On September 17, 2012 the Company entered into a Letter of Intent ("LOI") with Rio Alto Mining Limited ("Rio Alto") whereby Rio Alto has the option to earn a 65% interest in Ichuña by incurring a total of US\$8,000,000 in exploration costs within a four (4) year period, which shall include a drill program of 8,000 metres, of which a minimum of 4,000 metres must be drilled in the first year, and make a payment to Duran of \$500,000.

Pantheria Porphyry Copper Project

The Pantheria Porphyry Copper prospect is located in the Department of Huancavelica in south-central Peru. It consists of one main block totaling 1,700 hectares and another 400 hectare concession two kilometres to the east. In February 2011, an additional 3,200 hectares were added onto the previously existing concessions, bringing the total to 5,300 hectares.

The property is underlain by intermediate Tertiary volcanic flows and tuffs which have been pervasively clay + iron oxide +/- silica-altered over an area of 2.5 x 1.0 kilometres, with a dominant northeast-southwest orientation. Copper-mineralized diorite porphyry outcrops at the lowest elevations on the property. The Company interprets the geological environment to consist of a volcanic-intrusive complex with fingers of copper-bearing intrusive cutting an overlying, strongly altered volcanic package.

The extent and intensity of the alteration in the volcanic rocks indicate the presence of a very strong hydrothermal system driven by the underlying intrusive units. Quartz +/- tourmaline veins, veinlets, breccias, and local drusy quartz veinlets show a predominant northeast-southwest orientation and may control the distribution of the alteration. This alteration and associated geochemical anomaly appear to be focused over the areas of known intrusive bodies. Anomalous gold, silver, arsenic, antimony, lead, zinc, and mercury values extend over the entire quartz-clay altered area as mapped to date. The geochemical and alteration assemblages, combined with the textures of the drusy quartz veinlets, are indicators of a low-sulfidation epithermal gold-silver system.

Anomalous copper values cluster mostly in a 1.0 x 1.0 kilometre area, which is coincident with the area of strongest silicification and may be centred over the mineralizing system at depth. The highest copper values occur in weakly clay-altered diorite intrusive rock, with visible copper carbonates and local chalcocite. This mineral assemblage suggests that some remobilization of copper has occurred within the intrusive rock, and may indicate the presence of a supergene copper-enriched zone at some depth. Quartz stockwork veining is strongest nearer to the intrusive bodies.

Given the nature of the geological environment and mineralization, the Company is planning a ground-based induced-polarization and magnetic geophysical survey over the project area to help evaluate the potential for porphyry copper-gold and possible supergene copper mineralization at depth. The Company will combine geological, geochemical, and geophysical information in order to plan diamond drill testing in the future.

**DURAN VENTURES INC.
MANAGEMENT'S DISCUSSION AND ANALYSIS
FOR THE NINE MONTHS ENDED SEPTEMBER 30, 2012**

Don Pancho Silver-Lead-Zinc Project

The Don Pancho Silver-Lead-Zinc Project (600 hectares) is located in the Department of Lima. Don Pancho is a carbonate-replacement style silver-lead-zinc target, similar to the nearby Santander Project of Trevali Resources Corporation (Trevali). Previous sampling conducted by Hatum Minas on the Don Pancho Project returned values up to 238 g Ag/T, 4% zinc, and 9% lead. The mineralization appears to be structurally controlled, and has been traced over a zone measuring 800 x 300 metres at surface. The Company intends to conduct surface and underground sampling programs and is considering a geophysical survey in order to prepare the project for a diamond drilling campaign.

This project is approximately 10 kilometres to the west of the Santander Project, which has an updated NI 43-101 resource estimate (Trevali Resources Corp. News Release dated November 2, 2010, filed on SEDAR) of 5.858 million tonnes of 3.86% Zn, 1.35% Pb, and 44 g Ag/T (indicated category) and 4.806 MT of 5.08% Zn, 0.44% Pb, and 21 g Ag/T (inferred category).

On August 15, 2012 the Company entered into a LOI with a well-funded private Peruvian mining company (the "Optionee") to earn a 70% interest in the Don Pancho Project for cash consideration of US\$2,030,000.

Under the terms of the LOI the Optionee has the following option payment obligations to Duran:

1. US\$30,000 upon signing of the LOI;
2. US\$250,000 upon signing the Definitive Agreement (the "Agreement");
3. US\$750,000 eighteen (18) months after signing the Agreement; and
4. US\$1,000,000 to exercise the Optionee's purchase option to acquire 70% of the Project no later than forty-two (42) months after signing the Agreement.

In addition, the Optionee has the following exploration obligations:

1. Undertake a diamond drill program of at least 3,000 metres on the Project during the first eighteen (18) months after signing the Agreement;
2. Incur exploration costs of at least US\$3,500,000, including the diamond drill program, on the Project during the first thirty-six (36) months after signing the Agreement; and
3. Undertake to commence an economic study on the Project within thirty-six (36) months of signing the Agreement.

**DURAN VENTURES INC.
MANAGEMENT'S DISCUSSION AND ANALYSIS
FOR THE NINE MONTHS ENDED SEPTEMBER 30, 2012**

Minasnioc Gold-Silver Project

The Company acquired the Minasnioc Gold Project in a Peruvian government auction, which was carried out in three separate auctions due to the participation of three competing companies with overlapping areas. The Company won all three auctions. The Minasnioc Project is interpreted to be a high sulfidation (or acid-sulfate) epithermal gold-silver bearing system. The concession is located in the Department of Huancavelica, approximately 300 kilometres southeast of Lima. This project has seen previous intensive exploration campaigns by Barrick Gold Corporation ("Barrick") and Compañía de Minas Buenaventura S.A.C. ("Buenaventura") between 2001 and 2007, which included surface channel sampling and drilling. In February 2011, an 800 hectare concession was added to the main 1000 hectare concession, bringing the project area to a total of 1,800 hectares.

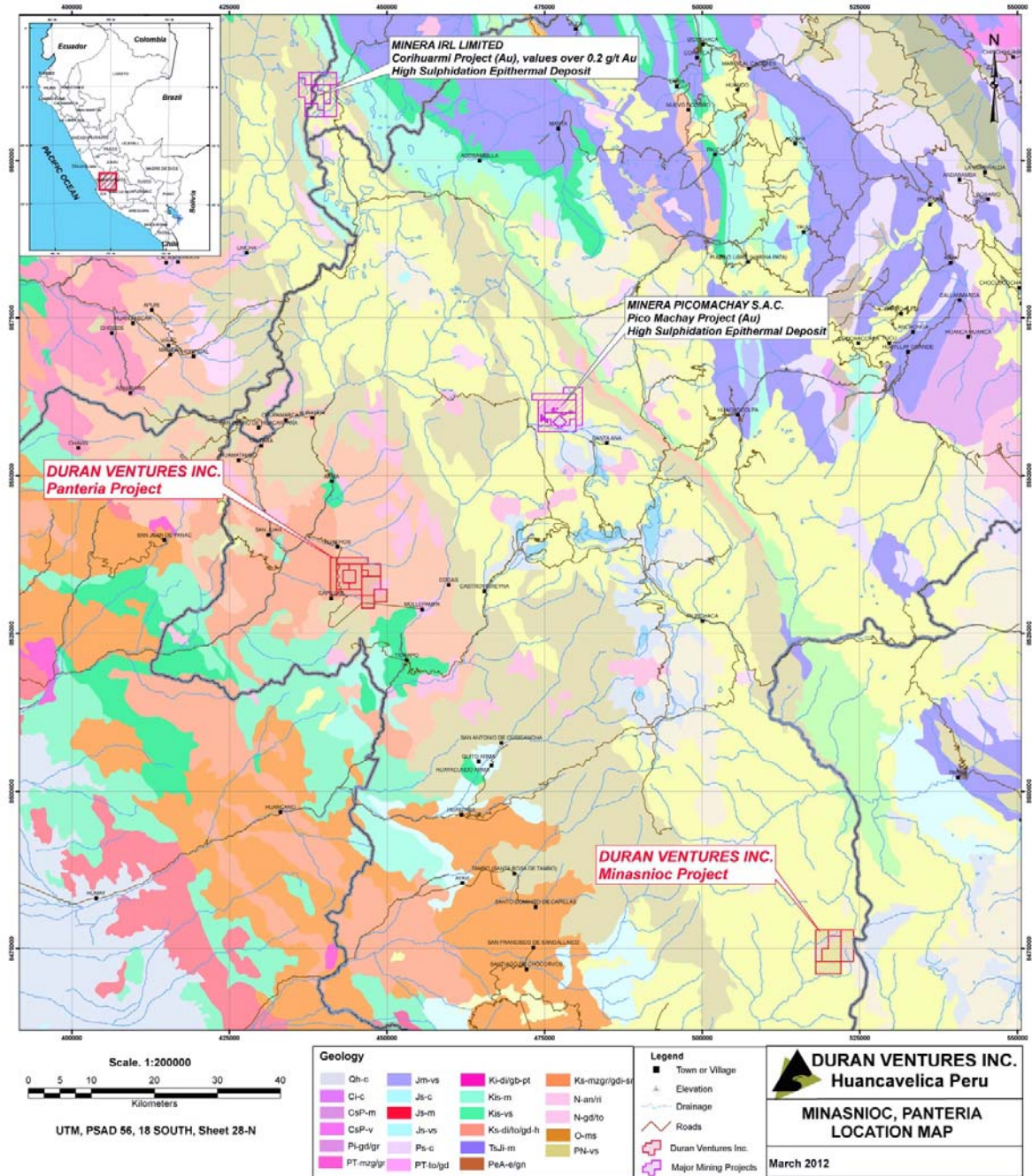
On April 11, 2012 the Company announced that it had acquired the historical geological and drill data from Barrick on its main Minasnioc Gold Project concession (see press release dated April 11, 2012 at <http://www.duranventuresinc.com/news.php>). Furthermore, Duran acquired three additional concessions (Aura Azul 6, 7 and 8) from Barrick totalling 2,000 hectares. The Minasnioc Gold Property, including the newly acquired concessions, now covers 3,800 hectares.

The purchase consideration paid to Barrick for the data acquired and the transfer of the Aura Azul 6, 7, and 8 concessions is 1,000,000 (one million) common shares of Duran. In addition, the three concessions acquired from Barrick will be subject to a 2% NSR to Barrick. The main Minasnioc Gold Property concession already held by Duran is not subject to any royalty.

Company geologists have made initial property visits and have defined a high sulfidation (acid sulphate) epithermal gold and silver bearing system developed in Tertiary volcanic rocks. Extensive zones of argillic and advanced argillic alteration are present, with areas of massive and vuggy silica with associated alunite. The gold-silver bearing part of the epithermal alteration system covers an area of 2 x 2 kilometres. The age of the volcanic host rocks and style of mineralization is similar to Barrick's Pierina and Alto Chicama Mines and Newmont/Buenaventura's Yanacocha Mine in Peru.

Other notable and comparable high sulphidation oxide gold properties in Southern Peru include Pan American's Pico Machay Property, Minera IRL's Corihuarmi and Aruntani's Rescatada Properties. It is important to note that the style of the oxide gold mineralization allows for low cost extraction. For example Minera IRL's Corihuarmi property produced 33,013 ounces of gold at an average of 0.87 g Au/T during 2010 at cash costs of \$383 per ounce. The Corihuarmi gold mine was placed in production in 2008 for a capital cost of US\$20 million. The Corihuarmi capital cost was recovered from pre-tax cash flow within the first 7 months of production. (source Minera IRL Limited website: <http://www.minera-irl.com/english/Mine/Corihuarmi/tabid/135/Default.aspx>)

DURAN VENTURES INC. MANAGEMENT'S DISCUSSION AND ANALYSIS FOR THE NINE MONTHS ENDED SEPTEMBER 30, 2012



Initial rock chip sampling by the Company shows widespread anomalous gold values with associated silver, arsenic, barium, lead, mercury, and antimony geochemical anomalies, which are typical of an altered precious metal bearing system. Samples were collected as one to four-metre rock chips and panel samples ranging from 2 x 2 metre to 5 x 5 metre panels. 21 of 35 samples returned assays greater than 0.1 g Au/T, with values as high as 2.96 g Au/T. 28 of 35 samples returned silver values of greater than 1.0 g Ag/T, 11 samples returned values of greater than 10.0 g Ag/T, and one sample returned a high value of 70.6 g Ag/T.

**DURAN VENTURES INC.
MANAGEMENT'S DISCUSSION AND ANALYSIS
FOR THE NINE MONTHS ENDED SEPTEMBER 30, 2012**

Forty one holes were drilled in 2003 and 2004 for a total of 5863 metres. Previous work by Barrick confirms widespread gold and silver mineralization associated with high sulphidation type alteration. The previous drilling discovered two distinct mineralized zones. The north zone shows disseminated Au-Ag mineralization over a 1200 metre east-west trend with several significant intersections starting at surface. The second mineralized zone is located some 2000 metres south of the north zone and intersected a silver rich zone with hole P-17 returning 57.8 g/t Ag starting at 5.2 metres. The following table highlights the historic drilling results:

Minasnioc Drill Hole Summary Highlights

Drill Hole	From	To	Interval	Au g/t	Ag g/t
P-02	0.00	55.78	55.78	0.550	3.56
P-03	10.00	50.00	40.00	0.382	16.00
B-06	98.00	110.00	12.00	0.345	1.97
	110.00	132.00	22.00	0.157	2.55
B-07	72.00	176.00	104.00	0.155	1.59
P-06	40.00	79.24	39.24	0.140	51.71
P-07	5.65	67.05	61.40	0.510	7.67
P-08	40.90	62.35	21.45	0.339	2.90
P-10	23.90	40.45	16.55	0.651	23.03
	89.50	100.20	10.70	0.259	2.33
P-12	13.85	35.60	21.75	0.279	5.56
P-14	0.00	60.00	60.00	0.314	19.54
P-16	28.55	46.25	17.70	1.150	9.78
P-17	5.20	63.00	57.80	nil	63.30
	140.90	156.20	15.30	nil	13.75
P-20	16.00	34.00	18.00	nil	41.86
P-23	99.05	300.23	201.18	0.454	5.15
includes	146.00	176.10	30.90	1.672	18.42
P-25	40.50	85.50	45.00	0.076	10.60
P-26	39.00	59.00	20.00	0.201	7.48
P-28	68.00	78.00	10.00	0.573	1.26
	136.00	156.00	20.00	0.010	17.10

All samples taken by Duran were prepared and analyzed at ALS Chemex in Lima (a certified laboratory). Analysis for gold is by fire assay with atomic absorption finish. Other elements are analyzed using a multi-element ICP analysis: elements assaying over-limits with ICP procedure are re-analyzed using atomic absorption. The Company maintains secure care and custody of samples.

Note that the historic drill results by Barrick Gold have not yet been verified by Duran Ventures and therefore must not be considered as National Instrument 43-101 compliant and should not be relied upon by investors in assessing the value of the Minasnioc properties. The project will require considerable future exploration which the Company intends to carry out in due course to verify historic results as well as assessing the full extent and nature of the mineralization on these properties.

**DURAN VENTURES INC.
MANAGEMENT'S DISCUSSION AND ANALYSIS
FOR THE NINE MONTHS ENDED SEPTEMBER 30, 2012**

On September 17, 2012 the Company entered into a LOI with Rio Alto whereby Rio Alto has the option to acquire a 51% interest in Minasnioc within a three (3) year period by performing all necessary exploration work in order to define a mineral resource to justify an economic assessment, and making a payment to Duran of \$500,000. Rio Alto may earn an additional 19% interest in Minasnioc within the subsequent two (2) year period by undertaking all necessary actions required to prepare Minasnioc for a production decision, including obtaining all required permits from the applicable Peruvian government ministry or agency, preparing a study which will form the basis for a production decision, and making a payment to Duran of \$500,000.

Additions to Current Concessions in Peru

On April 11, 2012 the Company acquired the historical geological and drill data from Barrick Gold Corporation ("Barrick") on its main Minasnioc Gold Project concession (see press release dated April 11, 2012 at <http://www.duranventuresinc.com/news.php>). Furthermore, Duran acquired three additional concessions (Aura Azul 6, 7 and 8) from Barrick totalling 2000 hectares. The Minasnioc Gold Property, including the newly acquired concessions, now covers 3800 hectares.

Outlook

The Company plans on conducting further economic and engineering studies on the Aguila property in order to complete the initial preliminary economic assessment ("PEA") on the property. The Company believes that a new copper porphyry copper district is being discovered and developed through its efforts and that of neighbouring Peñoles. If market conditions improve and financing is available, the Company plans further drilling to test surrounding priority geological, geochemical, and geophysical targets. Surface mapping, sampling, and geophysical surveys conducted to date demonstrate that the Aguila Project has potential to become a significant copper-molybdenum resource, with anomalous copper distributed over an irregular 1.7 x 1.2 kilometre surface area and strong geophysical anomalies distributed over a 3.0 x 2.0 kilometre area. Further drilling will also test for possible down dip Cu-Mo mineralization on the Pasacancha zone.

Sampling, mapping and drilling will be conducted on the Ichuña Cu-Ag project under the future direction partner Rio Alto. Road building commenced during the second quarter 2012.

Social baseline studies will be conducted in the areas of the Minasnioc project, under the future direction of partner Rio Alto, and the Mamaniña project. Historical data is being evaluated and assessed and exploration programs will be designed once the compilation of the historical data is complete. Results from the 2011 diamond drilling program at the Corongo Project are being evaluated, and follow-up exploration work will be planned with partner Viper.

The Company intends to maintain a pipeline of new projects by actively evaluating new prospects and targets throughout Perú, subject to financing constraints.

**DURAN VENTURES INC.
MANAGEMENT'S DISCUSSION AND ANALYSIS
FOR THE NINE MONTHS ENDED SEPTEMBER 30, 2012**

Selected Annual Information

The following table summarizes selected financial data for the Company for each of the last three fiscal years. The information set forth below should be read in conjunction with the December 31, 2011 audited Consolidated Financial Statements, prepared in accordance with International Financial Reporting Standards ("IFRS"), and their related notes. The information for the year ended December 31, 2010 has also been prepared in accordance with IFRS and Canadian Generally Accepted Accounting Principles ("CGAAP").

	<i>Years Ended</i>			
	<i>December 31, 2011 (IFRS) \$</i>	<i>December 31, 2010 (IFRS) \$</i>	<i>December 31, 2010 (CGAAP) \$</i>	<i>December 31, 2009 (CGAAP) \$</i>
<i>Revenues</i>	Nil	Nil	Nil	Nil
<i>Net loss</i>	7,934,920	2,671,976	1,161,685	1,207,113
<i>Loss per share</i>	0.04	0.02	0.01	0.02
<i>Total assets</i>	4,023,792	7,972,382	17,584,832	8,947,370
<i>Working capital</i>	1,798,651	5,903,544	5,903,544	711,433
<i>Total long term liabilities</i>	421,300	421,300	421,300	Nil
<i>Cash dividends</i>	Nil	Nil	Nil	Nil

Results of Operations

Unaudited Consolidated Statements of Loss and Comprehensive Loss	Three-Months Ended September 30 \$		Nine-Months Ended September 30 \$	
	2012	2011	2012	2011
EXPENSES				
Share-based compensation	57,801	-	487,106	1,649,927
Management and consulting fees	85,726	82,600	261,378	225,133
General and administrative	53,797	41,300	182,543	183,094
Advertising and public relations	9,702	6,645	56,218	74,100
Professional fees	22,887	79,636	115,998	158,815
Rent	12,733	15,548	32,953	18,713
Foreign exchange loss (gain)	38,540	(128,713)	61,573	(50,756)
Amortization	7,564	6,867	22,889	14,852
Exploration and evaluation expenditures	707,606	2,724,323	2,183,887	4,669,552
Loss before the under-noted Interest income	996,356 -	2,828,206 (6,649)	3,404,545 -	6,943,430 (15,740)
LOSS FOR THE PERIOD BEFORE INCOME TAXES	996,356	2,821,557	3,404,545	6,927,690
DEFERRED INCOME TAX EXPENSE	-	375	-	5,625
NET LOSS FOR THE PERIOD	996,356	2,821,932	3,404,545	6,933,315
Other comprehensive loss	20,000	47,625	8,000	84,375
COMPREHENSIVE LOSS	1,016,356	2,869,557	3,412,545	7,017,690
Loss per share – basic and diluted	0.005	0.015	0.017	0.038
Weighted average number of common shares Outstanding	200,676,751	183,049,958	191,776,993	180,153,269

**DURAN VENTURES INC.
MANAGEMENT'S DISCUSSION AND ANALYSIS
FOR THE NINE MONTHS ENDED SEPTEMBER 30, 2012**

Three months ended September 30, 2012

During the three months ended September 30, 2012, the Company had a net loss of \$996,356 compared to a net loss of \$2,821,932 for the same period in 2011. Share-based compensation increased as the Company granted 4,050,000 options during the three months ended September 30, 2012, whereas no options were granted during the same period during 2011. Advertising and public relations expense was lower in 2012 compared to the prior year period as the Company no longer engages capital market advisory consultants. Professional fees of \$22,887 (2011 - \$ 79,636) are lower in 2012 as the 2011 expenses included increased audit costs related to the transition to IFRS. Exploration property expenditures were higher in 2011 as the Company operated a drilling program on its Aguila project during 2011, with no drilling program undertaken in 2012.

Nine months ended September 30, 2012

During the nine months ended September 30, 2012, the Company had a net loss of \$3,404,545 compared to a net loss of \$6,927,690 for the same period in 2011. Share-based compensation decreased during the nine months ended September 30, 2012 as the Company granted fewer options (2012 – 6,200,000 stock options; 2011 – 8,510,000 stock options), and at a lower valuation. Management and consulting fees were higher due mainly to a general increase in fees effective January 1, 2012. Advertising and public relations expense was lower in 2012 compared to the prior year period as the Company no longer engages capital market advisory consultants. Professional fees of \$115,998 (2011 - \$ 158,815) are lower in 2012 due mainly to higher audit costs in 2011 related to the transition to IFRS. Rent expense of \$32,953 (2011 - \$18,713) reflects an increase in rent associated with new office premises, partially offset by sublease rental income. Exploration property expenditures were higher in 2011 as the Company operated a drilling program on its Aguila project during 2011, with no drilling program undertaken in 2012.

Other comprehensive loss of \$20,000 (2011 – \$84,374) relates to an unrealized year-to-date loss on securities held at September 30, 2012.

Summary of Quarterly Results

The following table sets out selected consolidated financial information for each of the eight most recently completed quarters:

Quarters Ended	Revenue \$	Net loss \$	Loss per share \$
<i>September 30, 2012</i>	Nil	(996,356)	(0.005)
<i>June 30, 2012</i>	Nil	(1,261,322)	(0.007)
<i>March 31, 2012</i>	Nil	(1,146,790)	(0.006)
<i>December 31, 2011</i>	Nil	(1,001,605)	(0.005)
<i>September 30, 2011</i>	Nil	(2,821,932)	(0.015)
<i>June 30, 2011</i>	Nil	(1,866,237)	(0.010)
<i>March 31, 2011</i>	Nil	(2,245,146)	(0.013)
<i>December 31, 2010</i>	Nil	(551,247)	(0.005)

**DURAN VENTURES INC.
MANAGEMENT'S DISCUSSION AND ANALYSIS
FOR THE NINE MONTHS ENDED SEPTEMBER 30, 2012**

Liquidity

The Company's liquid assets at September 30, 2012 were valued at \$1,298,973 (December 31, 2011 - \$1,970,741), consisting of cash of \$1,216,086 (December 31, 2011 - \$1,290,618), marketable securities of \$60,000 (December 31, 2011 - \$36,000) and amounts receivable of \$22,887 (December 31, 2011 - \$644,123). Substantially all of the Company's cash is on deposit with accredited Canadian Chartered Banks.

In August 2012, the Company entered into a Letter of Intent ("LOI") with a well-funded private Peruvian mining company to earn a 70% interest in the Company's Don Pancho Polymetallic Silver-Lead-Zinc Project located in the Department of Lima, Peru for total cash consideration of US\$2,030,000.

In September 2012, the Company closed a private placement with Rio Alto by issuing 5,000,000 units at \$0.15 per unit for gross proceeds of \$750,000. Each unit consisted of one common share and two half warrants; the "Series A" Warrants and the "Series B" Warrants. Each whole Series A Warrant is exercisable to acquire one common share at an exercise price of \$0.25 per share. Each whole Series B Warrant is exercisable to acquire one common share at an exercise price of \$0.35.

Capital Resources

Future capital requirements will predominately be incurred for the purpose of continued exploration of the Company's Peruvian properties.

At September 30, 2012, the Company had 43,321,320 warrants outstanding exercisable for gross proceeds of \$8,272,012.85.

Management believes that the funds currently on hand are sufficient to meet its short-term obligations. Additional funds as required in the future, will need to be raised successfully on the capital markets, or through strategic relationships.

On September 21, 2012, the Company's shares began trading on the Lima Exchange. The Company believes that its listing on the Lima Exchange will provide an opportunity for Peruvian and Latin American investors to participate in the growth of the Company as it continues to develop and advance its Peruvian projects.

Off Balance Sheet Arrangements

The Company does not utilize off-balance sheet arrangements.

**DURAN VENTURES INC.
MANAGEMENT'S DISCUSSION AND ANALYSIS
FOR THE NINE MONTHS ENDED SEPTEMBER 30, 2012**

Transaction with Related Parties

Related parties include the Board of Directors, close family members and enterprises which are controlled by these individuals as well as certain persons performing similar functions.

The remuneration of key management personnel and a related party of the Company for the nine months ended September 30, 2012 and 2011 were as follows.

		<u>2012</u>	<u>2011</u>
	CEO & President & Director		
Jeffrey Reeder		\$ 168,750	\$ 117,000
Steve Brunelle	Director	37,503	-
Oscar Pezo Camacho	Director and VP	38,566	-
Daniel Hamilton	CFO	97,500	70,333
Cary Pothorin	President	-	107,500
Carmen Yuen	Treasurer	46,076	37,800
Joe Brunelle	Consultant	19,000	31,200
Aggregate cash compensation		<u>\$ 407,395</u>	<u>\$ 363,833</u>

	CEO & President & Director		
Jeffrey Reeder		\$ 31,539	\$ 250,710
Joseph Del Campo	Director	21,025	207,780
John P. Thompson	Director	15,770	164,849
Steve Brunelle	Director	67,396	250,710
Todd Bruce	Director	15,770	164,849
Oscar Pezo Camacho	Director & VP	67,739	-
Daniel Hamilton	CFO	15,770	121,918
Cary Pothorin	President	-	121,918
Carmen Yuen	Treasurer	5,256	57,353
Joe Brunelle	Consultant	2,628	57,353
Share-based compensation⁽¹⁾		<u>\$ 242,893</u>	<u>\$ 1,397,440</u>

(1) Amounts were calculated using the grant date fair value determined in accordance with the Black-Scholes option pricing model.

The related parties were awarded the following stock options under the employee stock option plan during the nine months ended September 30, 2012:

	<u>Date of grant</u>	<u>Number of options</u>	<u>Exercise price</u>	<u>Expiry date</u>
Jeffrey Reeder	June 28, 2012	600,000	\$0.10	June 28, 2017
Joseph Del Campo	June 28, 2012	400,000	\$0.10	June 28, 2017
John P. Thompson	June 28, 2012	300,000	\$0.10	June 28, 2017
Steve Brunelle	January 11, 2012	300,000	\$0.24	January 10, 2017
	June 28, 2012	300,000	\$0.10	June 28, 2017
Todd Bruce	June 28, 2012	300,000	\$0.10	June 28, 2017
Oscar Pezo Camacho	April 18, 2012	500,000	\$0.15	April 18, 2017
	June 28, 2012	600,000	\$0.10	June 28, 2017
Daniel Hamilton	June 28, 2012	300,000	\$0.10	June 28, 2017
Carmen Yuen	June 28, 2012	100,000	\$0.10	June 28, 2017
Joe Brunelle	June 28, 2012	50,000	\$0.10	June 28, 2017
		<u>3,750,000</u>		

**DURAN VENTURES INC.
MANAGEMENT'S DISCUSSION AND ANALYSIS
FOR THE NINE MONTHS ENDED SEPTEMBER 30, 2012**

The related parties were awarded the following stock options under the employee stock option plan during the nine months ended September 30, 2011:

	<u>Date of grant</u>	<u>Number of options</u>	<u>Exercise price</u>	<u>Expiry date</u>
Jeffrey Reeder	March 14, 2011	1,000,000	\$0.29	March 14, 2016
	June 29, 2011	250,000	\$0.215	June 29, 2016
Joseph Del Campo	March 14, 2011	800,000	\$0.29	March 14, 2016
	June 29, 2011	250,000	\$0.215	June 29, 2016
John P. Thompson	March 14, 2011	600,000	\$0.29	March 14, 2016
	June 29, 2011	250,000	\$0.215	June 29, 2016
Steve Brunelle	March 14, 2011	1,000,000	\$0.29	March 14, 2016
	June 29, 2011	250,000	\$0.215	June 29, 2016
Todd Bruce	March 14, 2011	600,000	\$0.29	March 14, 2016
	June 29, 2011	250,000	\$0.215	June 29, 2016
Daniel Hamilton	March 14, 2011	400,000	\$0.29	March 14, 2016
	June 29, 2011	250,000	\$0.215	June 29, 2016
Cary Pothorin	March 14, 2011	400,000	\$0.29	March 14, 2016
	June 29, 2011	250,000	\$0.215	June 29, 2016
Carmen Yuen	March 14, 2011	200,000	\$0.29	March 14, 2016
	June 29, 2011	100,000	\$0.215	June 29, 2016
Joe Brunelle	March 14, 2011	200,000	\$0.29	March 14, 2016
	June 29, 2011	100,000	\$0.215	June 29, 2016
		5,200,000		

Critical Accounting Estimates

The preparation of these condensed consolidated interim financial statements in conformity with IFRS requires the Company's management to make judgments, estimates and assumptions about future events that affect the amounts reported in the consolidated financial statements and related notes to the financial statements. Although these estimates are based on management's best knowledge of the amount, event or actions, actual results may differ from those estimates and these differences could be material.

The areas which require management to make significant judgments, estimates and assumptions in determining carrying values include, but are not limited to:

- Assets' carrying values and impairment charges
In the determination of carrying values and impairment charges, management looks at the higher of recoverable amount or fair value less costs to sell in the case of assets and at objective evidence, significant or prolonged decline of fair value on financial assets indicating impairment. These determinations and their individual assumptions require that management make a decision based on the best available information at each reporting period.
- Capitalization of exploration and evaluation costs
Management has determined that exploration and evaluation costs incurred during the period have future economic benefits and are economically recoverable. In making this judgement, management has assessed various sources of information including but not limited to the geologic and metallurgic information, history of conversion of mineral deposits to proven and probable mineral reserves, scoping and feasibility studies, proximity of operating facilities, operating management expertise and existing permits.
- Mineral reserve and resource estimates
The figures for mineral reserves and mineral resources are determined in accordance with National Instrument 43-101, "Standards of Disclosure for Mineral Projects", issued by the Canadian Securities Administrators. There are numerous uncertainties inherent in estimating mineral reserves and mineral resources, including many factors beyond the Company's

**DURAN VENTURES INC.
MANAGEMENT'S DISCUSSION AND ANALYSIS
FOR THE NINE MONTHS ENDED SEPTEMBER 30, 2012**

control. Such estimation is a subjective process, and the accuracy of any mineral reserve or mineral resource estimate is a function of the quantity and quality of available data and of the assumptions made and judgments used in engineering and geological interpretation. Differences between management's assumptions including economic assumptions such as metal prices and market conditions could have a material effect in the future on the Company's financial position and results of operation.

- Impairment of exploration and evaluation assets
While assessing whether any indications of impairment exist for exploration and evaluation assets, consideration is given to both external and internal sources of information. Information the Company considers includes changes in the market, economic and legal environment in which the Company operates that are not within its control that could affect the recoverable amount of exploration and evaluation assets. Internal sources of information include the manner in which exploration and evaluation assets are being used or are expected to be used and indications of expected economic performance of the assets. Estimates include but are not limited to estimates of the discounted future after-tax cash flows expected to be derived from the Company's mining properties, costs to sell the properties and the appropriate discount rate. Reductions in metal price forecasts, increases in estimated future costs of production, increases in estimated future capital costs, reductions in the amount of recoverable mineral reserves and mineral resources and/or adverse current economics can result in a write-down of the carrying amounts of the Company's exploration and evaluation assets.
- Estimation of decommissioning and restoration costs and the timing of expenditure
Decommissioning, restoration and similar liabilities are estimated based on the Company's interpretation of current regulatory requirements, constructive obligations and are measured at fair value. Fair value is determined based on the net present value of estimated future cash expenditures for the settlement of decommissioning, restoration or similar liabilities that may occur upon decommissioning of the mine. Such estimates are subject to change based on changes in laws and regulations and negotiations with regulatory authorities.
- Income taxes and recoverability of potential deferred tax assets
In assessing the probability of realizing income tax assets recognized, management makes estimates related to expectations of future taxable income, applicable tax planning opportunities, expected timing of reversals of existing temporary differences and the likelihood that tax positions taken will be sustained upon examination by applicable tax authorities. In making its assessments, management gives additional weight to positive and negative evidence that can be objectively verified. Estimates of future taxable income are based on forecasted cash flows from operations and the application of existing tax laws in each jurisdiction. The Company considers whether relevant tax planning opportunities are within the Company's control, are feasible and are within management's ability to implement. Examination by applicable tax authorities is supported based on individual facts and circumstances of the relevant tax position examined in light of all available evidence.

Where applicable tax laws and regulations are either unclear or subject to ongoing varying interpretations, it is reasonably possible that changes in these estimates can occur that materially affect the amounts of income tax assets recognized. Also, future changes in tax laws could limit the Company from realizing the tax benefits from the deferred tax assets. The Company reassesses unrecognized income tax assets at each reporting period.

- Share-based payments
Management determines costs for share-based payments using market-based valuation techniques. The fair value of the market-based and performance-based share awards are determined at the date of grant using generally accepted valuation techniques. Assumptions are made and judgment used in applying valuation techniques. These assumptions and judgments include estimating the future volatility of the stock price, expected dividend yield, future employee

**DURAN VENTURES INC.
MANAGEMENT'S DISCUSSION AND ANALYSIS
FOR THE NINE MONTHS ENDED SEPTEMBER 30, 2012**

turnover rates and future employee stock option exercise behaviours and corporate performance. Such judgments and assumptions are inherently uncertain. Changes in these assumptions affect the fair value estimates.

- Contingencies

For the Company's contingencies please refer to Note 14 of the condensed consolidated interim financial statements for the three and nine months ended September 30, 2012, and on page 34 below.

Changes in Accounting Policies

The significant accounting policies are outlined in the September 30, 2012 condensed consolidated interim financial statements unless otherwise disclosed.

Accounting standards and interpretations issued but not yet adopted

IAS 1 - Presentation of Financial Statements ("IAS 1") was amended by the IASB in June 2011 in order to align the presentation of items in other comprehensive income with US GAAP standards. Items in other comprehensive income will be required to be presented in two categories: items that will be reclassified into profit or loss and those that will not be reclassified. The flexibility to present a statement of comprehensive income as one statement or two separate statements of profit and loss and other comprehensive income remains unchanged. The amendments to IAS 1 are effective for annual periods beginning on or after July 1, 2012.

IFRS 9 *Financial Instruments: Classification and Measurement* ("IFRS 9") issued in December 2009, effective for annual periods beginning on or after January 1, 2015, with early adoption permitted, introduces new requirements for the classification and measurement of financial instruments. Management anticipates that this standard will be adopted in the Company's consolidated financial statements for the period beginning January 1, 2015.

IFRS 10 *Consolidated Financial Statements* ("IFRS 10") provides a single model to be applied in the control analysis for all investees, including entities that currently are special purpose entities in the scope of SIC 12. In addition, the consolidation procedures are carried forward substantially unmodified from IAS 27 *Consolidated and Separate Financial Statements*. The Company intends to adopt IFRS 10 no later than the accounting period beginning on January 1, 2013.

IFRS 11 *Joint Arrangements* ("IFRS 11") replaces the guidance in IAS 31 *Interests in Joint Ventures*. Under IFRS 11, joint arrangements are classified as either joint operations or joint ventures. IFRS 11 essentially carves out of previous jointly controlled entities, those arrangements which although structured through a separate vehicle, such separation is ineffective and the parties to the arrangement have rights to the assets and obligations for the liabilities and are accounted for as joint operations in a fashion consistent with jointly controlled assets/operations under IAS 31. In addition, under IFRS 11 joint ventures are stripped of the free choice of equity accounting or proportionate consolidation; these entities must now use the equity method.

Upon application of IFRS 11, entities which had previously accounted for joint ventures using proportionate consolidation shall collapse the proportionately consolidated net asset value (including any allocation of goodwill) into a single investment balance at the beginning of the earliest period presented. The investment's opening balance is tested for impairment in accordance with IAS 28 *Investments in Associates* and IAS 36 *Impairment of Assets*. Any impairment losses are recognized as an adjustment to opening retained earnings at the beginning of the earliest period presented. The Company intends to adopt IFRS 11 no later than the accounting period beginning on January 1, 2013.

IFRS 12 *Disclosures of Interests in Other Entities* includes the disclosure requirements for all forms of interests in other entities, including joint arrangements, associates, special purpose vehicles and other

**DURAN VENTURES INC.
MANAGEMENT'S DISCUSSION AND ANALYSIS
FOR THE NINE MONTHS ENDED SEPTEMBER 30, 2012**

off balance sheet vehicles. The Company is currently evaluating the impact of the standard and intends to adopt the standard no later than the accounting period beginning on January 1, 2013.

IFRS 13 *Fair Value Measurement* ("IFRS 13") converges IFRS and US GAAP on how to measure fair value and the related fair value disclosures. The new standard creates a single source of guidance for fair value measurements, where fair value is required or permitted under IFRS, by not changing how fair value is used but how it is measured. The focus will be on an exit price. IFRS 13 is effective for annual periods beginning on or after January 1, 2013, with early adoption permitted. The Company intends to adopt IFRS 13 no later than the accounting period beginning on January 1, 2013.

Financial Risk Factors

The Company may be exposed to risks of varying degrees of significance that could affect its ability to achieve its strategic objectives. The main objectives of the Company's risk management process are to ensure that risks are properly identified and that the capital base is adequate in relation to those risks. The principal risks to which the Company is exposed are described below. There have been no changes in the risks, objectives, policies and procedures from the previous period.

a) Credit risk management

Credit risk relating to cash and accounts receivable arises from the possibility that any counterparty to an instrument fails to perform. The Company does not feel there is significant counterparty risk that could have an impact on the fair value of cash and cash equivalents and receivables.

b) Liquidity risk

The Company has in place a planning and budgeting process to help determine the funds required to support the Company's normal operating requirements on an ongoing basis and its capital, development and exploration expenditures. The Company ensures that there are sufficient funds to meet its short-term requirements, taking into account its anticipated cash flows from operations and its holdings of cash and cash equivalents.

Cash and cash equivalents include cash on hand and balances with banks and short-term deposits with original maturities of three months or less. The deposits are held in a Canadian chartered bank or a financial institution controlled by a Canadian chartered bank.

As of September 30, 2012, the Company had a cash balance of \$1,216,086 (December 31, 2011 - \$1,290,618) to settle current accounts payable and accrued liabilities of \$248,916 (December 31, 2011 - \$232,996). The Company's other current assets consist of marketable securities of \$60,000 (December 31, 2011 - \$36,000), amounts receivable of \$22,887 (December 31, 2011 - \$644,123) and prepaid expenses and advances of \$47,178 (December 31, 2011 - \$60,906).

c) Market risk

At the present time, the Company does not hold any interest in a mining property that is in production. The Company's viability and potential success depends on its ability to develop, exploit, and generate revenue from the development of mineral deposits. Revenue, cash flow, and profits from any future mining operations in which the Company is involved will be influenced by precious and/or base metal prices and by the relationship of such prices to production costs. Such prices can fluctuate widely and are affected by numerous factors beyond the Company's control. The fair value of the Company's marketable securities is also influenced by these factors and is therefore subject to market risk.

A change of plus or minus 5% in Canadian equity prices which would affect comprehensive income (loss) by approximately \$2,000 based on the fair value of marketable securities held at September 30, 2012.

**DURAN VENTURES INC.
MANAGEMENT'S DISCUSSION AND ANALYSIS
FOR THE NINE MONTHS ENDED SEPTEMBER 30, 2012**

d) Foreign exchange risk

The Company's financings are in Canadian dollars. Certain of the Company's transactions with its subsidiaries are incurred in foreign currencies and are therefore subject to gains or losses due to fluctuations in exchange rates.

As at September 30, 2012, the Company had cash balances of \$302,522 (US\$297,591) (December 31, 2011 - \$776,139 (US\$762,798)) in U.S. dollars and accounts payable of \$155,835 (S/.411,718) (December 31, 2011 - \$98,186 (S/.260,993)) in Peruvian Nuevo Soles.

Sensitivity to a plus or minus 5% change in the foreign exchange rate would have affected the net loss by approximately \$55,494 for the nine months ended September 30, 2012.

The Company does not undertake currency hedging activities to mitigate its foreign currency risk.

e) Interest rate risk

Interest rate risk is the risk that the fair value of future cash flows of a financial instrument will fluctuate because of changes in market interest rates. The majority of the Company's cash and cash equivalents balances earn interest at fixed rates over the next three to twelve months. It is management's opinion that the Company is not exposed to significant interest rate risk. The Company has no interest bearing debt.

A sensitivity analysis has determined that an interest rate fluctuation of 1% would not have resulted in significant fluctuation in the interest income during the nine months ended September 30, 2012.

f) Fair value of financial assets and liabilities

The book values of the cash, marketable securities, accounts receivable and accounts payable and accrued liabilities, approximate their respective fair values due to the short-term nature of these instruments.

The fair values together with the carrying amounts shown in the balance sheet are as follows:

	Carrying amount	Fair Value	Carrying amount	Fair Value
	As at September 30, 2012		As at December 31, 2011	
	\$	\$	\$	\$
Cash and cash equivalents	2,216,086	2,216,086	1,290,618	1,290,618
Marketable securities	60,000	60,000	36,000	36,000
Amounts receivable	22,887	22,887	644,123	644,123
Accounts payable and accrued liabilities	(248,916)	(248,916)	(232,996)	(232,996)

**DURAN VENTURES INC.
MANAGEMENT'S DISCUSSION AND ANALYSIS
FOR THE NINE MONTHS ENDED SEPTEMBER 30, 2012**

Other MD&A RequirementsCapital Stock

Balance, December 31, 2011	183,049,958
	Issued <u>17,463,750</u>
Balance, June 30, 2012	200,513,708
	Issued <u>5,000,000</u>
Balance, September 30 and November 27, 2012	<u>205,513,708</u>

Stock Options

Balance, December 31, 2011	13,825,000
	Issued 5,250,000
	Exercised (670,000)
	Expired <u>(1,415,000)</u>
Balance, June 30, 2012	16,990,000
	Issued 950,000
Balance, September 30, 2012	17,940,000
	Issued 950,000
Balance, November 27, 2012	<u>18,890,000</u>

Warrants

Balance, December 31, 2011	26,073,945
	Issued <u>4,350,500</u>
Balance, June 30, 2012	30,424,445
	Issued <u>12,896,875</u>
Balance, September 30 and November 27, 2012	<u>43,321,320</u>

Fully Diluted as at November 27, 2012

Capital Stock	205,513,708
Stock Options	18,890,000
Warrants	<u>43,321,320</u>
Total	<u>267,725,028</u>

Shareholders Rights Plan

A Shareholders Rights Plan Agreement ("SRP") between Duran Ventures Inc. and Equity Financial Trust Company was re-approved by shareholders at the Company's Annual and Special Meeting on June 29, 2011. The SRP was subsequently approved by the TSX Venture Exchange, and is effective June 29, 2011.

Risks and Uncertainties

At the present time, the Company does not hold any interest in a mining property in production. The Company's viability and potential successes lie in its ability to develop, exploit and generate revenue out of mineral deposits. Revenues, profitability and cash flow from any future mining operations involving the Company will be influenced by precious and/or base metal prices and by the relationship of such prices to production costs. Such prices have fluctuated widely and are affected by numerous factors beyond the Company's control.

The Company has limited financial resources and there is no assurance that additional funding will be available to it for further exploration and development of its projects or to fulfill its obligations under applicable agreements. Although the Company has been successful in the past in obtaining financing through the sale of equity securities, there can be no assurance that the Company will be able to obtain adequate financing in the future or that the terms of such financing will be favourable. Failure to obtain

**DURAN VENTURES INC.
MANAGEMENT'S DISCUSSION AND ANALYSIS
FOR THE NINE MONTHS ENDED SEPTEMBER 30, 2012**

such additional financing could result in delay or indefinite postponement of further exploration and development of the property interests of the Company, with the possible dilution or loss of such interests.

Commitments

Lease agreement

The Company signed a lease agreement for office space commencing June 1, 2011. The term of the lease is for a period of five years, expiring on May 31, 2016. The annual lease payments are approximately \$135,000.

Management contracts

Effective January 1, 2012, the Company entered into certain management and consulting contracts. Minimum annual commitments under the agreements are approximately \$405,000. These contracts also require that additional payments of up to \$720,000 be made upon the occurrence of certain events such as a change of control.

Appointments

On April 19, 2012, Mr. Oscar Francisco Pezo Camacho was appointed to the Board of Directors. Mr. Pezo is a Peruvian National and is well known in the Peruvian mining and financial communities.

Subsequent Events

On October 1, 2012, Mr. Alex Black and Mr. David Prins were appointed to the Company's Board of Directors. Mr. Black is currently the President, CEO and Director of Rio Alto Mining Limited, which operates the La Arena gold mine located in north central Peru. Mr. Black holds a BSc in Mining Engineering from the University of South Australia and is a member of the Australasian Institute of Mining and Metallurgy. Mr. Prins is a Civil Engineer with extensive experience in the evaluation, design, planning, and subsequent development execution stages of mining projects, principally in Latin America.

Mr. Todd Bruce resigned from the Board of Directors effective October 1, 2012.

The Company granted 950,000 stock options on October 1, 2012 to certain directors of the Company at an exercise price of \$0.15 per share, expiring on September 30, 2017.

Additional disclosure of the Company's technical reports, material changes reports, news releases and other information can be obtained on SEDAR.